



VCU

Office of Research and Innovation **spotlights...**

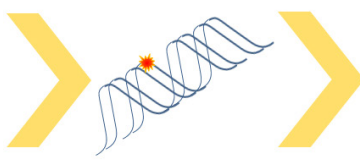
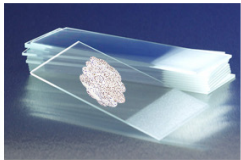
June 2016

Tissue & Data Acquisition & Analysis Core (TDAAC)

The TDAAC is a Massey Cancer Center supported core laboratory designed to provide high quality human tissue samples to VCU investigators as well as provide customized services to assist them in tissue collection, consenting, and processing needs. The core represents a close collaboration within and between multiple disciplines and departments within VCU Health including the Massey Cancer Center and Departments of Pathology, Surgery, and Internal Medicine. Solid tumors from over 50 different tissue types make up this comprehensive tissue bank, including both malignant and nonmalignant samples. TDAAC also cryopreserves mononuclear cells from a variety of hematopoietic neoplasias and makes them readily available to researchers. TDAAC offers support to various clinical trials where patient screening and tissue sample acquisition is required. Please visit our website at www.pathology.vcu.edu/research/TDAAC to submit a service request form.

PROCESSING SERVICES

- Mononuclear cell separation and cryopreservation of hematopoietic samples
- Frozen and H&E stained OCT embedded tissue sections
- Other (Specified by investigator or clinical trial protocol)



AVAILABLE TISSUE TYPES

- | | | |
|-------------------------|--------------------------------|------------------------------|
| • Abdominal Cavity | • Larynx | • Pleura |
| • Adrenal Gland | • Lip, Oral Cavity, Oropharynx | • Prostate |
| • Anus | • Liver | • Renal Neoplasms |
| • Axilla | • Lung | • Salivary Gland |
| • Bone | • Lymph Node | • Skin (Carcinoma, Melanoma) |
| • Bone Marrow | • Neck | • Small Bowel |
| • Brain and Spinal Cord | • Nose and Paranasal Sinuses | • Soft Tissue |
| • Breast | • Omentum | • Spleen |
| • Cervix | • Ovary | • Stomach |
| • Chest Wall | • Pancreas | • Testis |
| • Colon | • Parathyroid | • Thymus |
| • Endometrium | • Pelvic Cavity | • Thyroid |
| • Esophagus | • Penis | • Urinary Bladder |
| • Fallopian Tube | • Peripheral Blood | • Uterus (not endometrium) |
| • Gallbladder | • Peritoneum | • Vagina |
| • Heart | • Pituitary | • Vulva |

DIRECTORS



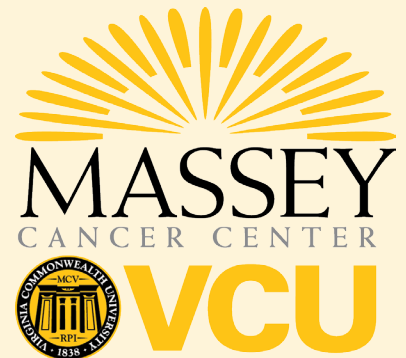
Catherine I. Dumur, PhD



Michael O. Idowu, MD, MPH

CONTACT

Pamela Jill Grizzard, Manager
pamela.grizzard@vcuhealth.org
 804-628-3615



TDAAC: Enhancing
Translational Scientific
Research

Tissue Bank Sample Utilization

Specimen Acquisition &
Patient Informed Consent

Custom Sample Processing

Clinical Support Center
2nd Floor
403 North 13th Street
Richmond, VA 23298

VCU IRB #2471